



THIRSK RACECOURSE

YORKSHIRE RACING & EVENTS



2024
RACING
SEASON
INFORMATION

ADMISSION PRICES 2024

*Free entry for under 18's when accompanied by a paying adult



| DATE | RACEDAY | PREMIER | | | | GRANDSTAND, PADDOCK & PICNIC | | | | | | | |
|---------------------|--|---------|--------------------|----------------|----------|--------------------------------|------------|----------------|-------------|------------------------|---------------|--------------------------|-----|
| | | Premier | Premier Pre-booked | Pre-booked 10+ | Transfer | Grandstand, Paddock and Picnic | Pre-booked | Pre-booked 10+ | Park & View | Park & View Pre-booked | Family Ticket | Family Ticket Pre-booked | OAP |
| Saturday 20th April | Vickers.bet Season Opener | £33 | £28 | £25 | £13 | £20 | £17 | £15 | £40 | £34 | £30 | £25 | £12 |
| Saturday 4th May | Vickers.bet Thirsk Hunt Cup | £33 | £28 | £25 | £13 | £20 | £17 | £15 | £40 | £34 | £30 | £25 | £12 |
| Saturday 18th May | SkyBet Irish Day | £33 | £28 | £25 | £13 | £20 | £17 | £15 | £40 | £34 | £30 | £25 | £12 |
| Friday 7th June | Vickers.bet Raceday | £28 | £23 | £20 | £10 | £18 | £15 | £13 | £36 | £30 | £30 | £25 | £12 |
| Sunday 16th June | SkyBet Sunday Series Father's Day | N/a | N/a | N/a | N/a | £20 | £15 | £13 | £36 | £30 | £30 | £25 | £12 |
| Monday 24th June | Afternoon racing | £28 | £23 | £20 | £10 | £18 | £15 | £13 | £36 | £30 | £30 | £25 | £12 |
| Wednesday 3rd July | Afternoon racing | £28 | £23 | £20 | £10 | £18 | £15 | £13 | £36 | £30 | £30 | £25 | £12 |
| Wednesday 17th July | Afternoon racing | £28 | £23 | £20 | £10 | £18 | £15 | £13 | £36 | £30 | £30 | £25 | £12 |
| Friday 26th July | GRIY Superheroes Family Day | £28 | £23 | £20 | £10 | £18 | £15 | £13 | £36 | £30 | £30 | £25 | £12 |
| Saturday 3rd August | William Hill Summer Cup | £33 | £28 | £25 | £13 | £20 | £17 | £15 | £40 | £34 | £30 | £25 | £12 |
| Friday 9th August | Circus Family Day | £28 | £23 | £20 | £10 | £18 | £15 | £13 | £36 | £30 | £30 | £25 | £12 |
| Friday 16th August | Sausage and Craft Beer Evening | £28 | £23 | £20 | £10 | £18 | £15 | £13 | £36 | £30 | £30 | £25 | £12 |
| Friday 30th August | All Creatures Great and Small Family Day | £28 | £23 | £20 | £10 | £18 | £15 | £13 | £36 | £30 | £30 | £25 | £12 |
| Saturday 7th Sept | Ladies' Day | £38 | £33 | £30 | £18 | £20 | £17 | £15 | £40 | £34 | £30 | £25 | £12 |
| Monday 16th Sept | Season Finale | £28 | £23 | £20 | £10 | £18 | £15 | £13 | £36 | £30 | £30 | £25 | £12 |

New for 2024 – we request that you add a complimentary ticket for any accompanying under 18's

Pre-booked prices are valid until 48 hours before the race meeting, e.g. midnight on Wednesday for a Saturday meeting.

Tickets and badges can be purchased up to the time of gates opening, however after the pre-booked window has closed these will be at the 'On the day' price as above.





PREMIER ENCLOSURE ENTRY TO EVERY FIXTURE

The Thirsk Premier Season Ticket is now on sale for just £160. Offering a full season of racing with entry into Premier Enclosure to all of Thirsk's 15 race fixtures in 2024!



KEY FEATURES:

- The Season Ticket is fully transferable, so if the ticket holder is unable to attend a race meeting it may be used by others.
- It's a great way to reward staff, or share entry to the race meetings with friends & family!
- Season Ticket holders will be entitled to a discount of £15 on any pre-purchased Premier Enclosure dining or hospitality package (1 discount per Season Ticket per meeting)
- Season Ticket holders are guaranteed a complimentary racecard upon entry.

TO PURCHASE OR FOR MORE INFORMATION:

Call: 01845 522 276 or visit thirskracecourse.net

NB. The mechanics: The card itself should be presented at the Premier Entrance, where it will be scanned to authorise entry for 1-person. The card will only authorise 1-entry per meeting. The ticket-bearer, once authorised will then be handed a Premier Enclosure badge and a racecard and invited to enjoy a great day's racing at Thirsk. If a Season Ticket is reported lost it will be cancelled so no unauthorised use is possible and a replacement card issued (for a £20 administration fee).



PREMIER ENCLOSURE BARS & RESTAURANTS

The Premier Enclosure is our top enclosure with views of the Parade Ring and access to all the public facilities on the Racecourse, including the following Premier Bars and Restaurants, which are exclusive to Premier Enclosure racegoers:

The Gin & Fizz Bar:

This popular bar is situated on the ground floor of the Paddock Stand, offering a full bar service and includes a speciality Gin bar. There is a terrace to the front with a trackside view from which to enjoy the racing action.

The Cherry Tree Bar:

Situated on the ground floor of the Pavilion, the popular Cherry Tree bar offers a full bar service and perfectly placed outdoor seating area.

The Woolpack:

Situated adjacent to the Parade Ring and featuring Theakston's legendary hand-pulled real ale amongst a full bar service.

The Shrimp:

This fantastic bar and eatery is situated next to the Parade Ring, offering our 'Fresh Deli Platter' package and a full bar service. On busy Saturday's it is advisable to book the platter package. The bar is reserved for diners until the first race.

The Thomas Lord Dine & View Restaurant*:

This restaurant offers a panoramic view of the racing action from the comfort of your own table, whilst enjoying a sumptuous dining experience.

The Hambleton Dining Room*:

Thirsk's traditional silver-service, a la carte dining room, with old school charm, first-class service and wholesome Yorkshire fayre. Situated on the ground floor of the Hambleton Stand, the Hambleton Dining Package is served here which should be booked in advance.*.

**pre booking essential*



GRANDSTAND PADDOCK AND PICNIC ENCLOSURE

The Grandstand, Paddock and Picnic Enclosure (sometimes referred to as The Tattersalls Enclosure) is a more relaxed offering to the Premier Enclosure with no set dress code. This enclosure offers grandstand viewing with seating, with access to view the Parade Ring and Winner's Enclosure. It also offers a range of well serviced bars with additional street food vendors. The Saddle Room offers quality cafeteria-style meals with a variety of fast food and lighter options available throughout the Paddock Enclosure. Both the Betting Ring and Betting Shop are situated in this enclosure, as well as numerous betting windows, with live music throughout the day on the bandstand.

Picnic

The Picnic Area is a great place for the whole family to enjoy, there is a permanent adventure playground with extra activities on our dedicated family days. Most activities and entertainment are provided free of charge (unless stated otherwise).

You are welcome to bring a picnic to eat in this area which makes it a popular choice amongst racegoers and especially families. Please note, however, we do limit each racegoer aged 18 and over to one bottle of wine OR four cans of beer / cider per person, with no spirits permitted inside, which may only be consumed within the designated Picnic Area. Premier badge holders are also able to enter the racecourse by the Grandstand Paddock and Picnic entrances and enjoy their picnics in the designated area, before enjoying the Premier Enclosure.

Park & View

The Park & View ticket admits one vehicle with up to four adults into a specified trackside area within the Grandstand, Paddock and Picnic Enclosure. This ticket is ideal for car-boot picnics.

All Grandstand Paddock and Picnic Enclosure patrons may transfer up to the Premier Enclosure on the day for the designated transfer fee, please take note that those transferring will need to adhere to the Premier dress code.

BARS AND EATERIES

Saddle Room Buffet – serves delicious hot & cold meals, sandwiches & snacks

James Herriot Hall – full bar service plus hot and cold snacks & sandwiches

1967 Stand – full bar service in Bar 67

Mobiles – offering tasty street food





Family Days

AT THIRSK RACECOURSE

Sunday 16th June – SkyBet Sunday Series (Father's Day)

Friday 26th July – GRIY Family Day

Friday 9th August – Circus Family Day

Friday 30th August – All Creatures Great and Small

Thirsk Racecourse is proud to be at the heart of the community, and we're thrilled to be hosting four family themed race days in 2024. Each will host a range of children's activities, most if not all are free of charge, offering lots of added entertainment to keep the little ones engaged whilst enjoying the racing. Here at Thirsk, we welcome and encourage junior racegoers at all meetings and offer free admission for all accompanied under 18s. We even host bouncy castles at our Saturday racedays as we appreciate it's the little things that add to a families day out. The Grandstand

Paddock and Picnic Enclosure is the perfect place for the whole family to enjoy a great value day out, however under 18's are more than welcome in our Premier Enclosure when accompanied by an adult.

We offer a range of ticket options for families, including our Park and View and Family tickets. Pre-booking is advised for the best value, with up to 20% off the on the day price when booking in advance. Please see our website for full details

Please drink responsibly; Thirsk Racecourse operates a zero tolerance policy with regards to anti social behaviour.

PRE BOOKED FAMILY TICKET ONLY £25

Now available at any fixture. This ticket includes entry for two adults plus accompanied children into the Grandstand Paddock & Picnic Enclosure. On the day price £30.

More information at thirskracecourse.net

PRIVATE HOSPITALITY

Whether you are racing on business, pleasure or both, why not add a touch of luxury to your raceday with your own private box or marquee.



PRIVATE BOXES

With breathtaking, panoramic views across the North Yorkshire countryside and set opposite the winning post, a private box is a special way to enjoy an exhilarating day at Thirsk races. Racegoers will enjoy fine dining, first class service and a spectacular view of the racing.

(Minimum 8 – maximum 50 guests)



PRIVATE HOSPITALITY MARQUEES

Thirsk's VIP private marquees located by the Parade Ring or Trackside on the inside of the course will get you closer to the action from the comfort of your own marquee. With your own bar, lawned area and delicious dining, these are perfect for hosting a corporate day, or to simply enjoy something really special with friends and family (minimum 20 guests).

(Minimum 20 – maximum 300 guests)

For more details, please call the racecourse office on 01845 522 276 or email info@thirskracecourse.net

THOMAS LORD 'DINE & VIEW' RESTAURANT PACKAGE



Hambleton Dining Package

EVENINGS FROM:

£64.00 (incl. VAT)

WEEKDAYS FROM:

£69.00 (incl. VAT)

SATURDAYS FROM:

£79.00 (incl. VAT)

LADIES' DAY FROM:

£94.00 (incl. VAT)

PACKAGE INCLUDES:

- Premier Enclosure car parking, entry & badge
- **Your reserved table for the day in the Hambleton Dining Room**
- The official colour racecard and form guide
- The choice of either a two or three-course meal from our new bistro-style menu.
- Optional traditional English Afternoon Tea at £13.50 per person, which must be ordered at the time of booking

DINE & VIEW THE THOMAS LORD SUITE PACKAGE

EVENINGS:

£99.00 (incl. VAT)

WEEKDAYS & SUNDAYS:

£129.00 (incl. VAT)

SATURDAYS:

£149.00 (incl. VAT)

LADIES' DAY:

£165.00 (incl. VAT)

PACKAGE INCLUDES:

- Premier Enclosure car parking
- Thomas Lord Suite Entry & Badge
- The official colour racecard with form guide
- **Reserved table for the meeting in the superbly appointed Thomas Lord Suite with a fabulous view of the racing action**
- Delicious three-course luncheon selected from the a la carte menu
- Traditional English afternoon tea*
- Private betting facility
- TV coverage of the racing
- Exclusive cash bar throughout the day
- Private cloakroom facilities

* Evening service is dinner, excluding afternoon tea.

THE SHRIMP



EVENINGS:

£67.00 (incl. VAT)

WEEKDAYS:

£67.00 (incl. VAT)

SATURDAYS:

£77.00 (incl. VAT)

LADIES' DAY:

£89.00 (incl. VAT)

PACKAGE INCLUDES:

- Premier Enclosure car parking, entry & badge
- The official colour racecard and form guide
- Your table is reserved until the first race after which The Shrimp Bar is then open to all Premier Badge Holders.
- The choice of a chilled seafood, meat or vegan platter served with hot new potatoes and salads (N.B your platter choice must be pre-selected)
- A small light dessert

BOOK ONLINE AT thirskracecourse.net
OR CALL 01845 522 276

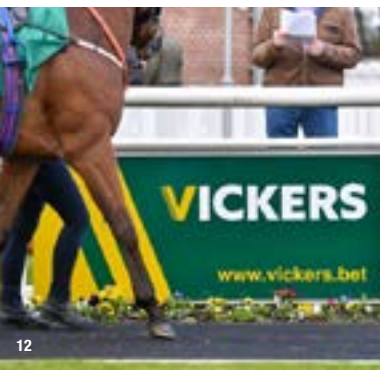


SPONSORSHIP & ADVERTISING OPPORTUNITIES

Race sponsorship is widely recognised as a unique and highly effective method of brand promotion and advertising for business of all shapes and sizes. It's also a popular option for families and friends as an exciting and memorable way to celebrate a special occasion such as a birthday, anniversary or as part of a corporate day out.

On course advertising at Thirsk is another great way to get your business seen, most options are included within our race sponsorship packages. However, we do offer stand along advertising and branding locations such as the parade ring, stable bend and trackside.

Contact us today to see how we can help make your day special or get your business seen. For further information contact Erin Boswell, General Commercial Manager on erin@thirskracecourse.net or call 01845 522276.



FAQ's

Can I buy tickets on the day?

You can, but we strongly advise you to book via our website in advance. It's the easiest and cheapest way as you save over 20% when you book in advance, you'll also get your e-tickets instantly for a smooth and speedy entry.

Do I need to pre-book tickets or badges?

No they can be bought on the day, however it's cheaper to buy in advance.

All dining packages do need to be booked in advance; however, we may have walk-in availability on the day. Please check ahead by calling the office.

What is the difference between enclosures?

We have two different enclosures, The Premier Enclosure and the Grandstand Paddock and Picnic Enclosure. The Premier Enclosure has prime grandstand viewing adjacent to the winning post, exclusive restaurant options, including fine dining and the most comprehensive bar choices with covered outside drinking lawns.

The Grandstand Paddock and Picnic Enclosure is great if you'd like to bring your own picnic into the racecourse, however, there are food outlets and numerous bars in this area. Racegoers in both enclosures have access to view the horses in our Parade Ring in addition to a range of on-course bookies, Tote points and a William Hill shop.

What should I wear?

We only have a dress code for those in the Premier Enclosure, which includes our Private Hospitality Boxes and restaurants. Although we have a slightly more relaxed smart casual dress code, gentlemen are required to wear a shirt with a collar. See website for further details.

Is Thirsk Racecourse suitable for families?

Yes, we have a permanent playground, and always have bouncy castles and slides at every weekend race day. In addition to this we have four family days where we make sure there is plenty of children's entertainment. Please see page 8 for more information on our Family Days.

Do children get in for free?

Yes, all under 18s are welcome free of charge when accompanied by an adult and we politely ask that you add a complimentary children's ticket to your booking into any enclosure.

Should you require a restaurant or dining package for a child, please contact The Racecourse Office.

Can I bring in my own food and drink?

Picnics are only permitted into the Grandstand Paddock and Picnic Enclosure via the Picnic Entrance. No food or drink will be allowed to be brought into the Premier Enclosure. Should you wish to bring alcohol to accompany your picnic, we allow four cans or one bottle per person.

For further FAQ's please visit our website thirskracecourse.net

RACECOURSE MAP

| GENERAL | |
|---|---|
| | Toilet |
| | Baby Change |
| | Accessible Toilet |
| | First Aid |
| | Accessible Parking |
| | Accessible Viewing |
| PREMIER ENCLOSURE | |
| 1. Premier Enclosure (Car Park) | 9. Pavilion, Cherry Tree Bar (Ground floor) |
| 2. Premier Enclosure and Owners & Trainers Entrance/First | 10. Harbottle Dining Room |
| 3. Woodcock Bar | 11. The Terrace Level and Suite |
| 4. The Dining (Star & Skydome) | 12. Dine & View |
| 5. Restaurants | 13. Owners & Trainers Suite (inc. Chequer Room) |
| 6. Lift to grand boxes & Theatre | 14. Private Boxes |
| 7. Premier Enclosure | 15. Harbottle Stand |
| 8. Accessible seating | |
| 9. Car & Tree Bar | |
| GRANDSTAND, Paddock & Picnic Enclosure (G/P&P) | |
| 16. Saddling Boxes | 26. Grand Enclosure |
| 17. Pre-Race Bar | 27. Entrance/Exit |
| 18. Pre-Race Bar | 28. Public Car Park |
| 19. Wingfield Room | 29. Saddle Room Boxes |
| 20. Winner's Enclosure | 30. Betting Ring |
| 21. Accessible Viewing - Paddock | 31. Race View |
| 22. Temporary & Betting Shop | 32. Information Booth |
| 23. Paddock Enclosure | 33. Accessible Viewing |
| 24. Paddock seating | 34. Grandstand |
| 25. Wingfield | 35. Bar E1 |
| 26. Accessible Office | 36. Betting Shop |
| 27. Accessible Paddock/Pre-Race | 37. 1980 Stand |
| 28. Transfer | |
| 38. Park & View Terrace | |
| 39. Betting Ring | |
| 40. Viewing Stand | |
| 41. Accessible Viewing | |
| 42. Grandstand Paddock and Picnic Entrance/Exit | |
| 43. Park & View | |
| 44. Court Field | |



MUCH MORE THAN A RACECOURSE...

CONFERENCES, CELEBRATIONS & EVENTS

Thirsk Racecourse offers some of the finest Conference rooms, Outdoor space and Event facilities in North Yorkshire, including the stunning Chestnut Room which can host up to 240 guests in round banqueting seating.

With easy access to the A1M and A19 and with Thirsk's station on the East Coast mainline, Thirsk Racecourse's conference and event facilities are easy to reach.



The
Chestnut
Room



Available to book
for functions and events

For more information please contact the racecourse office
T: 01845 522276 E: info@thirskracecourse.net
or visit thirskracecourse.net

HOW TO FIND US:



BY ROAD:

Located to the west of the town in between Carlton Miniott and the Town Centre on the A61 Thirsk/Ripon road.

SAT NAV - YO7 1QL. FREE PARKING FOR ALL ENCLOSURES.

BY RAIL:

Thirsk Station is located 1/2 mile from the Racecourse.

A free raceday shuttle bus operates between Thirsk train station and the Racecourse from gates opening, to the first race, then from 30 minutes before the last race to an hour after.

BY AIR:

Light aircraft and helicopters can land at Bagby
(4 miles - 5 minutes by taxi) Tel: 01845 597385

Thirsk Racecourse Ltd,
Station Road, Thirsk, North Yorkshire, YO7 1QL

Tel: 01845 522276

Email: info@thirskracecourse.net

thirskracecourse.net

Get social with us:



@thirskraces